

**CERTIFIED RECORD OF LAND CORNER MONUMENTATION**

**History of original corner establishment:**

The original corner was set in 1881 by Herman Gradon under Contract No. 416, dated August 19, 1881.

The original notes state:

North bet secs 31 & 32

40.00 Set a basalt stone 12x6x10 ins 8 ins in the ground for 1/4 sec cor marked 1/4 on W face from which

A pine 15 ins dia bears S 60° E 33 lks dist marked 1/4SBT

A pine 14 ins dia bears S 55° W 32 lks dist marked 1/4SBT.

DIAGRAM

T9S R32E

1/4

S311S32

**Description of corner evidence found:**

Found a 12x8x7 (12x10x6) stone marked 1/4 on the North face, lying top to the East.

A 32" P.Pine bears S 57° E, 23.4 ft to face(S 60° E, 33 lks), burnt face, fragmentary scribing visible.

The roothole of a pine, down and deteriorating, bears S 51° W, 23.1 ft (S 55° W, 32 lks), no marks visible.

**Description of monument and accessories I establish to perpetuate the original location of this corner:**

Set a 2 1/2x28" aluminum monument 22" in the ground and buried the original stone on the North side.

I establish new bearing trees:

A 10" Fir bears S 39-3/4° E, 25.9 ft, scribed 1/4S32BT.

A 9" P.Pine bears S 69-3/4° W 18.8 ft, scribed 1/4S31BT.

T9S R32E

1/4

S311S32

PLS1918

1988

New BTs have 3/4" brass washers marked PLS1918 attached to the BT blaze, faces and bands painted with red tree marking paint, and BT tags and Attention or Land Survey Monument signs. A steel fence post with Attention or Land Survey Monument sign is driven approximately 3-5 feet from the corner.

Sun Cadastral Survey, Cont No. 53-04H1-7-4011

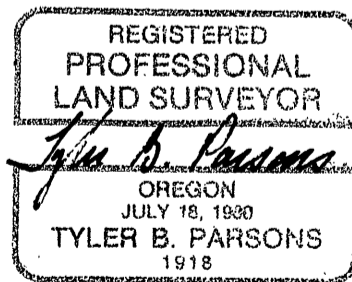
Field Book: 4-42 & 6-47

Work accomplished: 9/3/88

Witnesses: Tyler Parsons, Sharon Parsons  
Louise Parsons, Douglas Parsons

Job No.: 87221

PARSONS SURVEYING  
1915 S.E. Stone Street  
Corvallis, OR 97333  
(503) 752-7515



Office of COUNTY SURVEYOR County of GRANT  
State of OREGON, I hereby certify that the within instrument was filed in this office  
for record on the 24th day of Feb, 1987

Robert H. Bayless  
(COUNTY OFFICIAL) (DEPUTY)